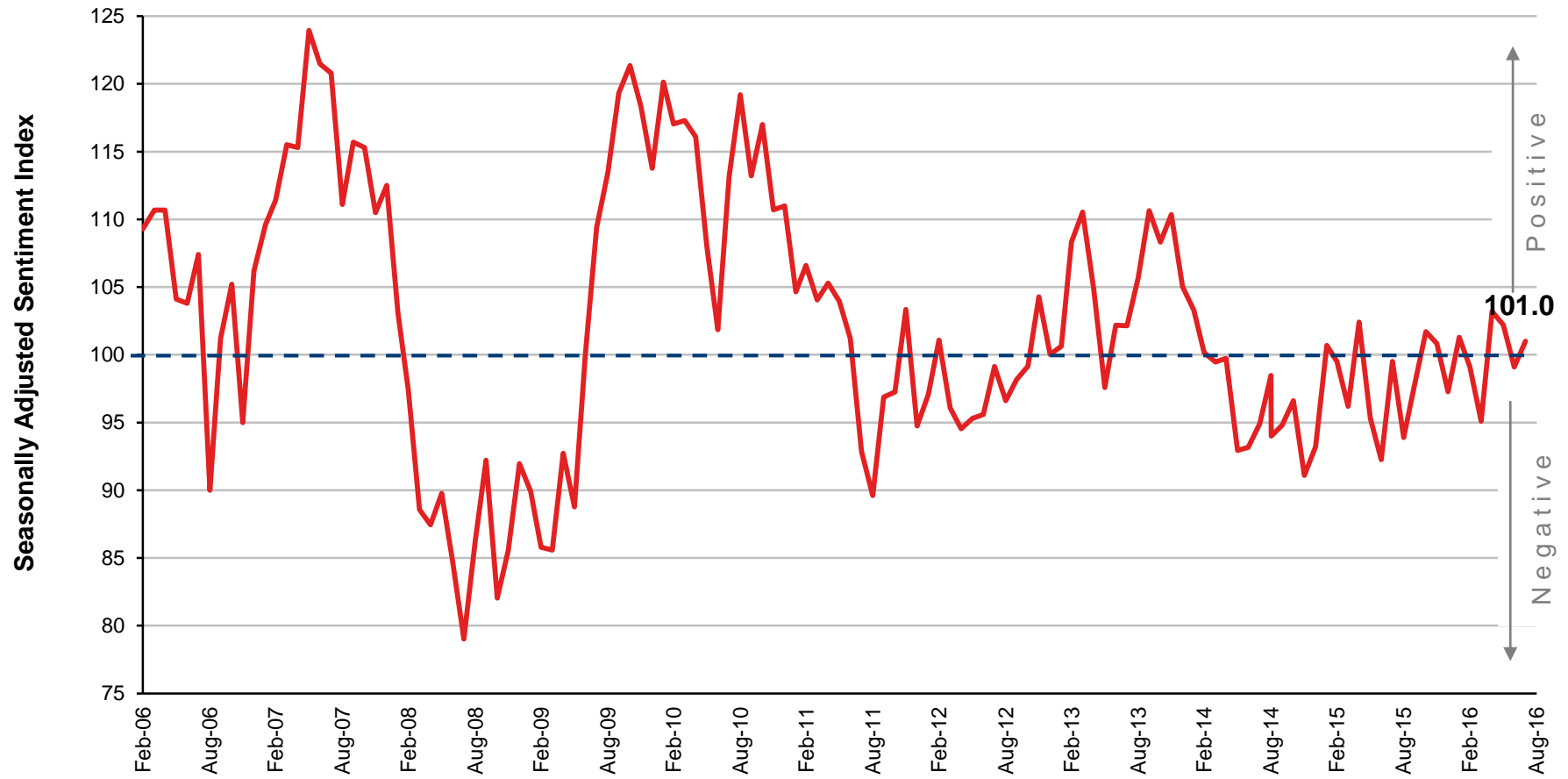




VIC Economic Core Graphs

Q3 2016

AUSTRALIAN CONSUMER SENTIMENT

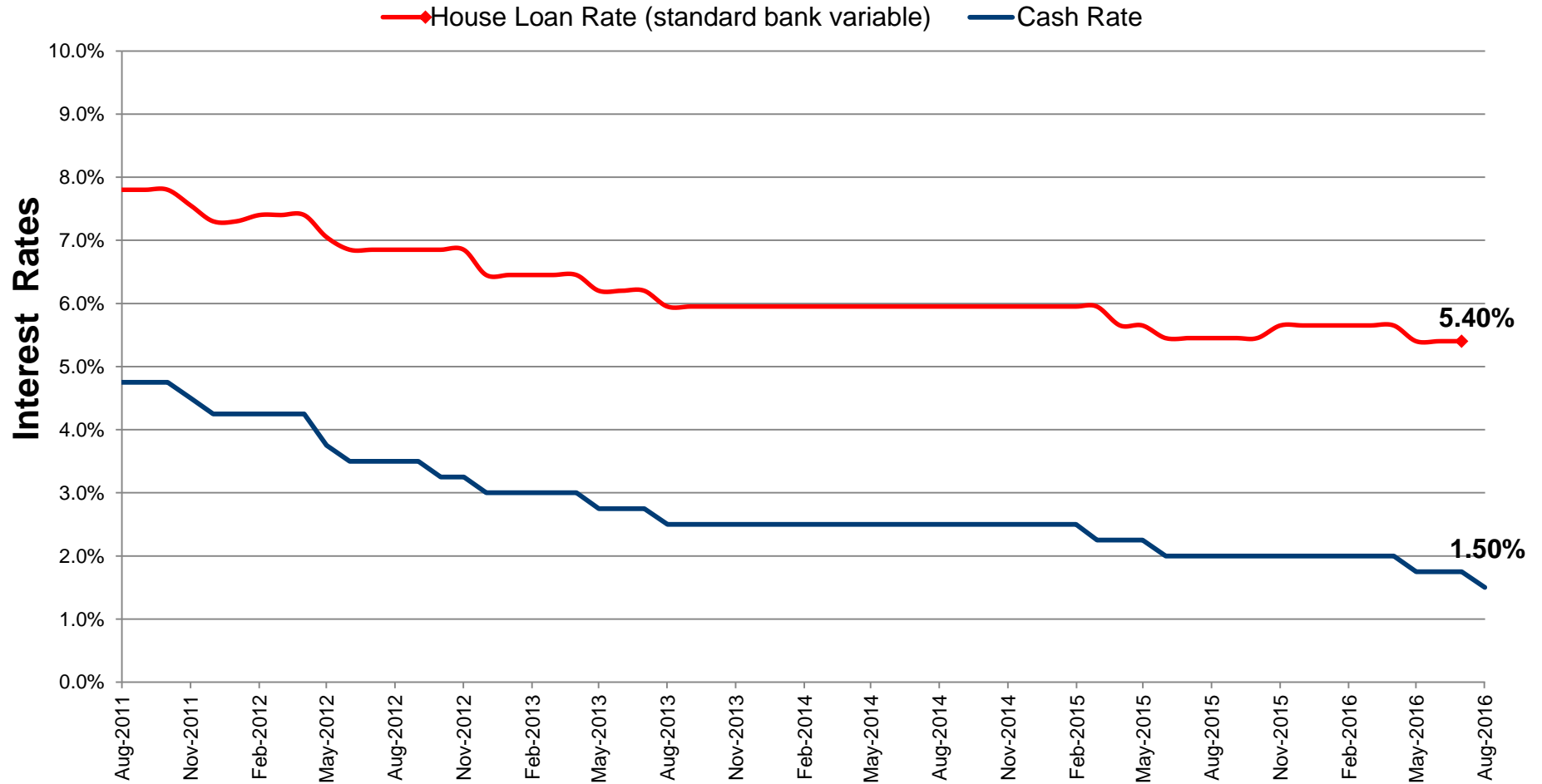


Prepared by PRDnationwide Research
Source: Westpac-Melbourne Institute

Monthly

Issue date: September 2016

INTEREST RATES

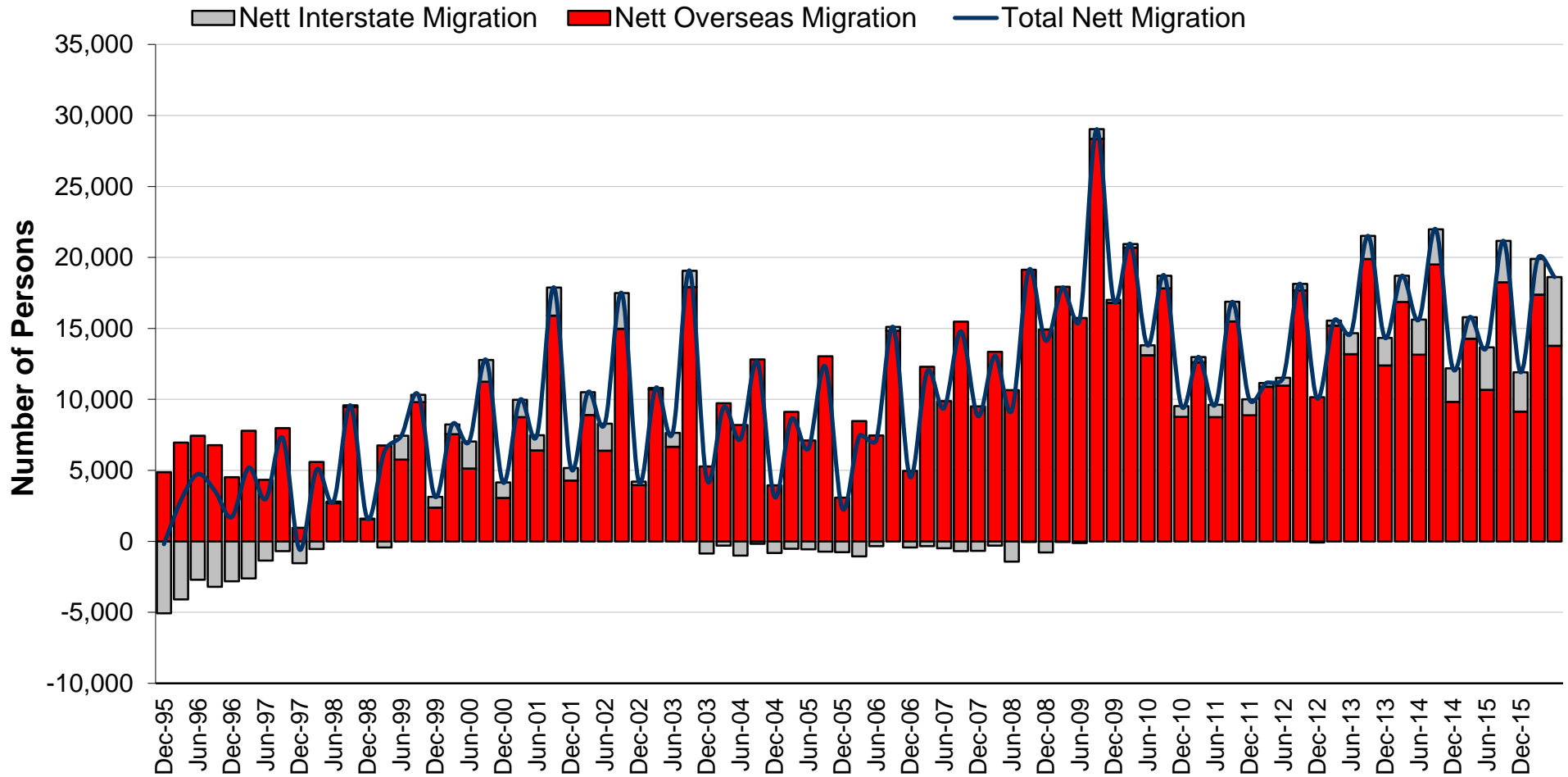


Prepared by PRDnationwide Research
Source: Reserve Bank of Australia

Quarterly

Issue Date: September 2016

VIC NETT MIGRATION

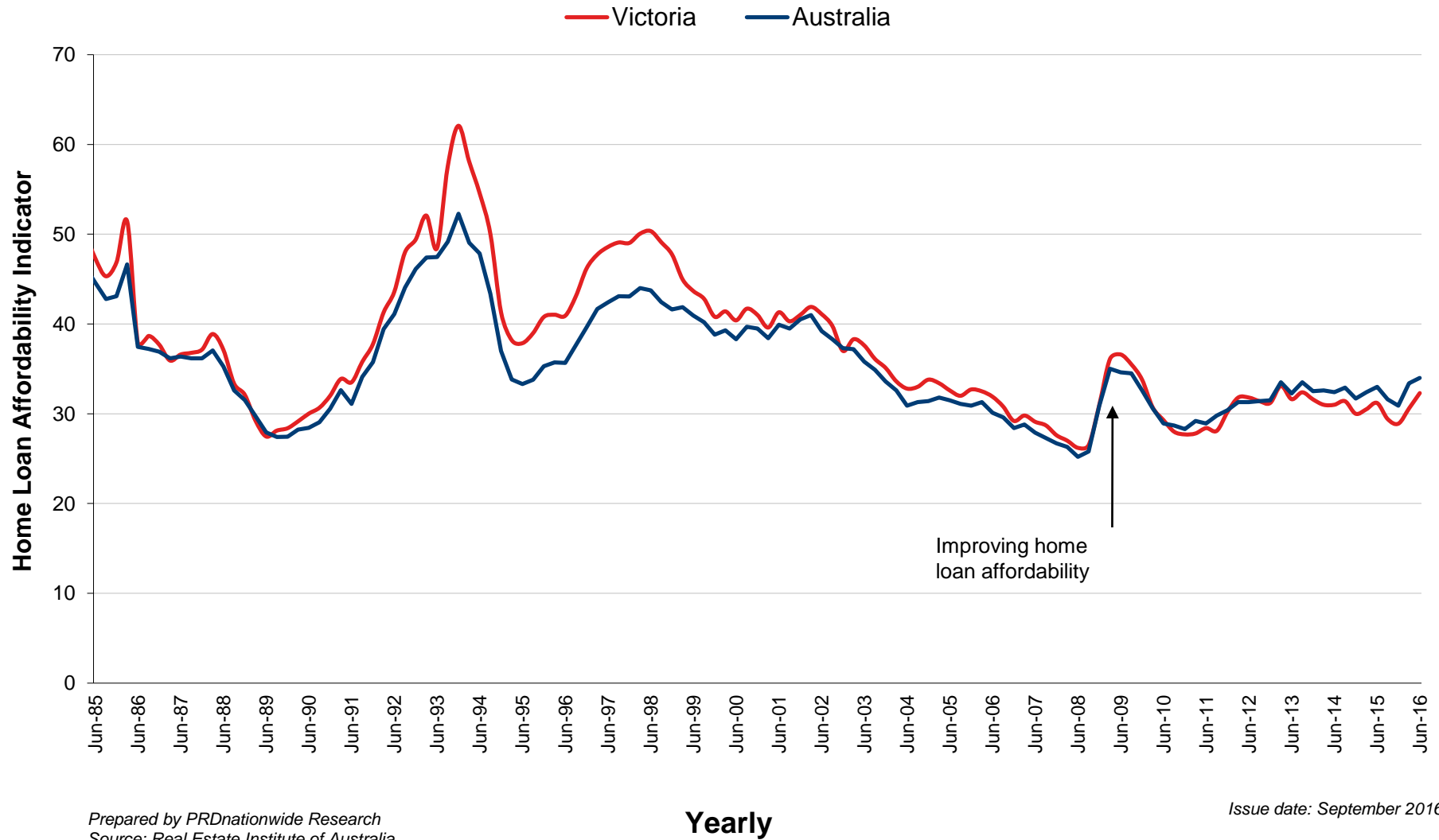


Prepared by PRDnationwide Research
Source: Australian Bureau of Statistics

Half Yearly

Issue date: September 2016

VIC HOME LOAN AFFORDABILITY



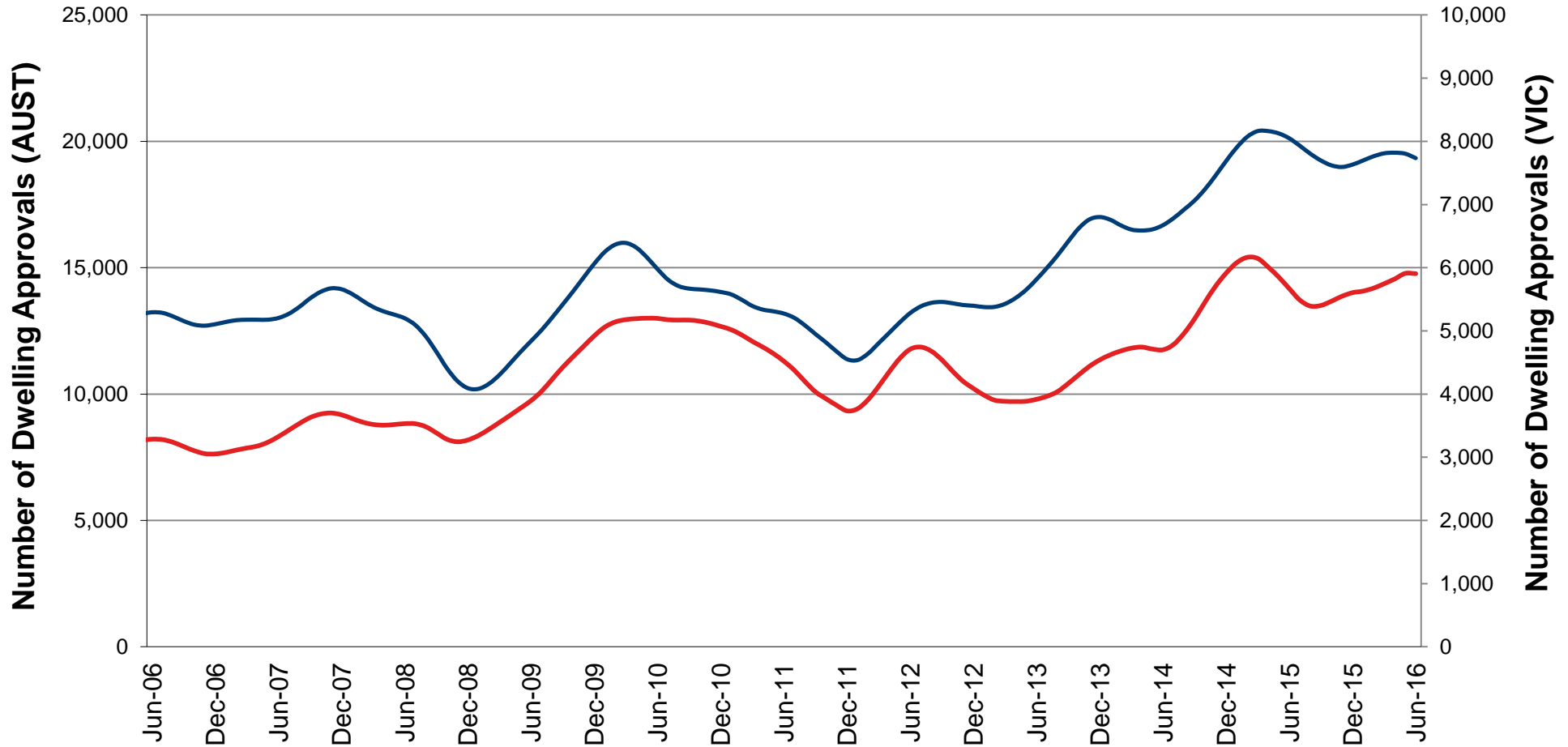
Prepared by PRDnationwide Research
Source: Real Estate Institute of Australia

Yearly

Issue date: September 2016

VIC DWELLING APPROVALS

— Australia — Victoria

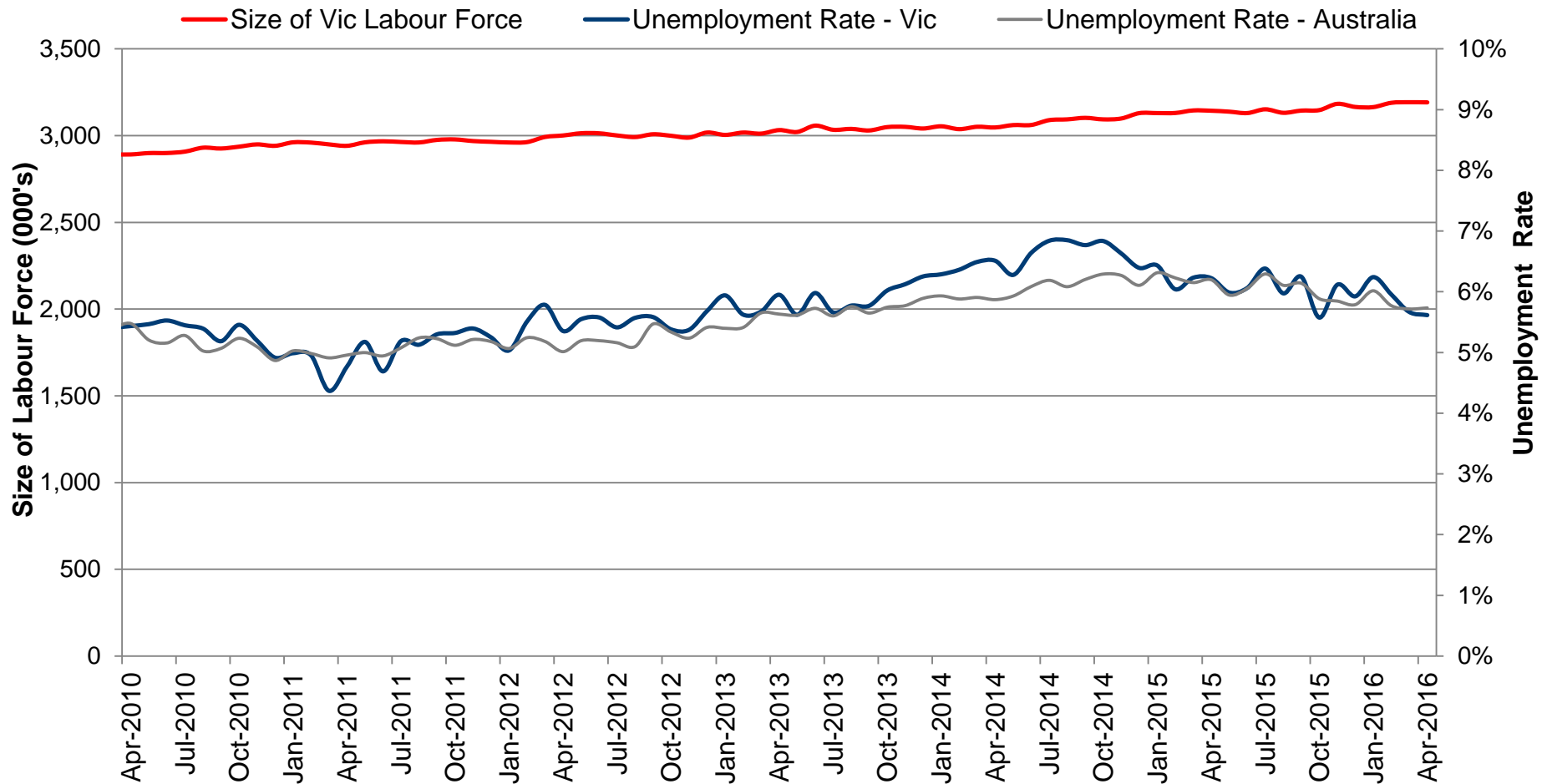


Prepared by PRDnationwide Research
Source: Australian Bureau of Statistics

Half Yearly

Issue date: September 2016

VIC EMPLOYMENT STATUS



Prepared by PRDnationwide Research
Source: Australian Bureau of Statistics

Quarterly

Issue date: September 2016

40 Years of Leading Property Industry Research



Contact us:

PRDnationwide Corporate Head Office

Phone: +61 7 3229 3344

Email: info@prd.com.au

Address:

32-36 Doggett Street,

Newstead, QLD, Australia

www.prdnationwide.com.au